



# **Title I Annual Meeting & Family Involvement Night**

**September 22<sup>nd</sup>, 2015  
6:00 pm**



# **Welcome – Kathy Ellington,**

## ***Parent Involvement Coordinator***



# What is Title I?

- A federally funded program designed to ensure that all children have a fair, equal, and significant opportunity to obtain a high-quality education and reach, at a minimum, proficiency on challenging state academic standards and state academic assessments.

# WCSD Mission



- To ensure that all students learn

# 2015-2016 WCSD Goals



*2015 data will be used as a baseline for GA Milestones End of Grade Assessments while will not be available until October 2015.*

1. The percent of students scoring at proficient or higher on GMAS exams will increase by 3% per tested subject area.
2. Increase the SWD graduation rate from 45.8% to 50%.



# 2014-2015 Accomplishments

- Walton County Star Student/Teacher
- CTAE New Teacher of the Year
- AP Scholar Achievements
- TSA Recognition
- FBLA Chapter Honors
- FCCLA National Award

# How does a school qualify for Title I?



- Forty percent or more of the student population qualifies for free or reduced lunch assistance.

**55.4% of MAHS  
qualifies for free or  
reduced lunch  
assistance.**



# How do we know if we are improving?

Status terms: **Reward**, **Priority**, **Focus** and **Alert Schools**

Title I schools will now implement specific programs and interventions based on this new status identification.

***Walton County School District does not have ANY Priority, Focus, or Alert Schools.***

Georgia's Statewide Accountability System, the *College and Career Readiness Performance Index* (CCRPI) will serve as a comprehensive report card for all schools In Georgia.

**Perception Data/Title I Parent Survey:** This data provides us with your feedback on what we are doing correctly to keep you involved and what improvements to assist you that we can make to increase parent involvement. Please complete this survey when the survey window is advertised at our school.



Reward Schools	Priority Schools	Focus Schools	Alert Schools Based on 9 ESEA Subgroups
Highest Performing Schools and Highest Progress Schools- 10 % of Title I Schools	Lowest Achieving Schools- 5% of Title I schools	Lowest Achieving Schools- 10% of Title I Schools	Both Title I and Non-Title I schools
Identified annually	Identified every three years	Identified every three years	Identified annually
Replaces Distinguished Schools and Distinguished Districts designations	Requires: Flexible Learning Program (FLP) for 3 years	Requires: Flexible Learning Program (FLP) for 3 years	(Does not include Priority Schools or Focus Schools).
<ul style="list-style-type: none"> <li>May be classified as either a Highest-Performing school or</li> <li>A High-Progress School.</li> </ul>	<ul style="list-style-type: none"> <li>The lowest 5% of Title I schools in the state</li> <li>Based on the achievement of the All Students group in terms of proficiency on the statewide assessments with a lack of progress over a number of years in the All Students group;</li> <li>Are a Title I-participating or Title I-eligible high school with a graduation rate &lt;60 % over a number of years; or</li> <li>A Tier I or Tier II school under the School Improvement Grants (SIG) program that is using SIG funds to implement a school intervention model</li> </ul>	<ul style="list-style-type: none"> <li>Title I high school with a graduation rate &lt;60% over 2 years; or</li> <li>Title I school that has the largest within-school gaps between the highest-achieving subgroup or subgroups and the lowest-achieving subgroup or subgroups, or</li> <li>At the high school level, has the largest within-school gaps in graduation rates (within-school-gaps Focus School).</li> </ul>	<ul style="list-style-type: none"> <li>Achievement that falls far below (3 standard deviations) the state's average performance on statewide assessments and or graduation rate.</li> <li>Schools can fall into one of the three following categories:               <ul style="list-style-type: none"> <li>Graduation Alert,</li> <li>Subgroup Alert or</li> <li>Subject Alert</li> </ul> </li> </ul>

MAHS

# MAHS CCRPI Information



Data is located on the State DOE website:

<http://ccrpi.gadoe.org/2013/>

**MAHS CCRPI Scores:**

**2014 CCRPI Score: 63.4**

**Monroe Area High School**

Strengths	Opportunities
■ ELA	■ EOCT for ED/SWD Students
■ Move On When Ready Participation	■ Graduation Rate
■ Individualized Graduation Plans	■ Math
■ Career Inventories for ALL Students	■ Increase EOCT Exceeding Scores
■ Closing Achievement Gaps in Math & Social Studies	■ Increase pathway completers



# We MUST Have A Plan!

- MAHS Schoolwide Plan determines Title I spending and priorities
  - Based on needs assessment, including achievement data and perception results
- Plan developed by a team of teachers, administrators, and parents
- Input welcomed at various parent/community involvement events



# 2015-2016 Goals

- Improve student performance in Algebra I.
  - 35.7% of students will meet or exceed on the Algebra I Georgia Milestones End of Course test.
- Improve student performance in Geometry.
  - 31.7% of students will meet or exceed on the Geometry Georgia Milestones End of Course test.
- Improve student Lexile measures.
  - 44.1% of students will achieve a Lexile measure greater than or equal to 1275 on the American Literature Georgia Milestones End of Course test.



# Title 1 Funding

- MAHS 15-16 Title 1 Budget Priorities:
  - Math tutors (3)
  - IXL for Reading and Math
  - Read 180
  - Community Involvement Efforts
  - Professional Learning Resources
  - National At Risk Youth Conference


# Title I Parent Involvement Funding



One percent (1%) of all LEA Title I Funds are set aside for helping keep parents involved.



All the principals of the WCPS Title I schools have agreed to again to pool funds.

  
**Title I, Part A**  
**Districtwide Parent Activity Project Assurance Form**

To comply with federal guidelines, districts that receive an allocation of more than \$500,000 must reserve 1 percent of their total allocation. 95 percent of the 1 percent must be allocated directly to participating Title I schools.

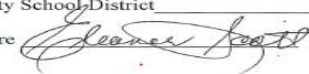
An exception may be made to this provision if participating Title I principals agree to pool all or part of their parental involvement allocation for a district-level parental involvement activity/project.

Districts with schools exercising this flexibility must provide supporting documentation on the Attachments tab of the consolidated application budget.

The following Title I principals have agreed without coercion to pool all or part of their parental involvement allocation for a district-level parental involvement activity/project.

Title I School	Title I Principal	Signature of Title I Principal	Amount Toward Districtwide Activity/Project
Harmony Elem.	Dr. Barbara Griffith		\$ 2570.00
Loganville Elem.	Camie McGaughey		\$ 2566.00
Monroe Elem.	Dr. Zeester Swint		\$ 2566.00
Walker Park Elem.	Dr. Seabrook Royal		\$ 2566.00
Walnut Grove Elem.	Dr. Cindy Callaway		\$ 2566.00
Atha Road Elem.	Madenna Landers		\$ 2566.00
Carver Middle	Dr. Dawn Spruill		\$ 2566.00
Loganville Middle	Christy Bowman		\$ 2566.00
Youth Middle	David Todd		\$ 2566.00
Monroe High	Bryan Hicks		\$ 2566.00
Walnut Grove High	Dr. Sean Callahan		\$ 2566.00

LEA \_\_\_\_\_ Walton County School District

Title I Director's Signature  Date 8/28/2014

# **L.E.A.R.N.**

- ***L – Learning Targets***
- ***E – Engaged Students***
- ***A – Assessment Of and For Learning***
- ***R – Responsive Instruction***
- ***N – Environment that supports above goals...***
- ***Success built upon meaningful RELATIONSHIPS with students.***

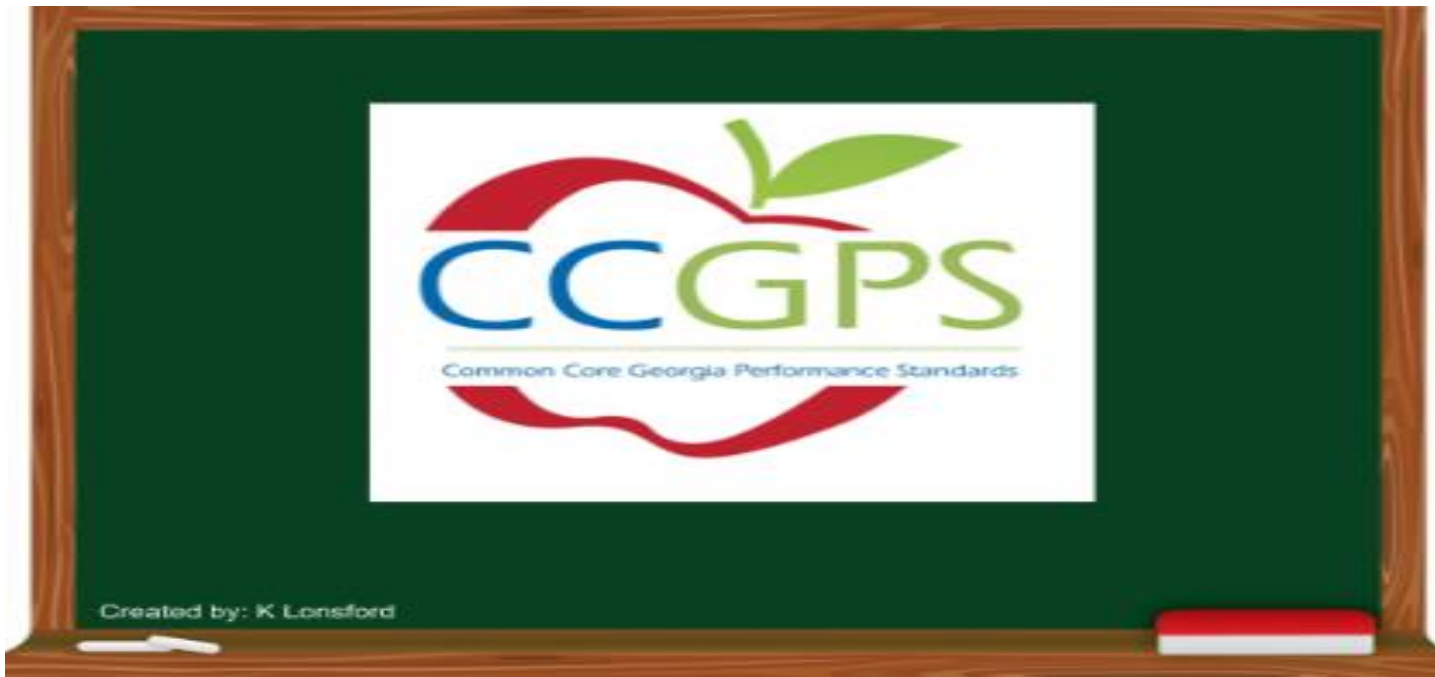
# Curriculum Information



[www.georgiastandards.org](http://www.georgiastandards.org)

***GSE***

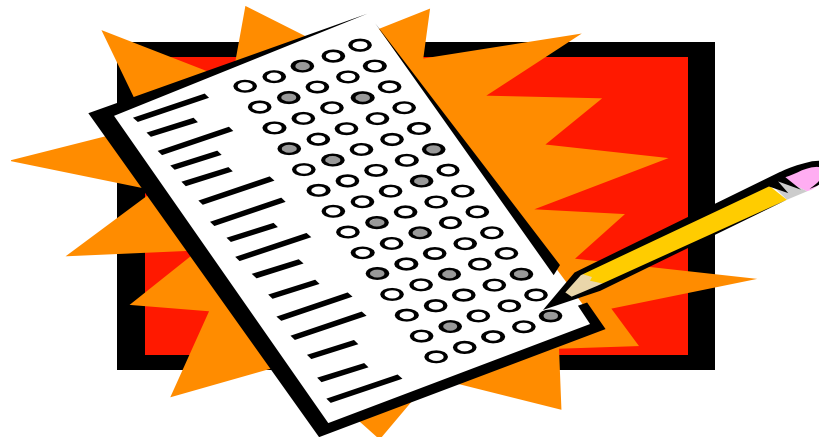
Georgia Standards of Excellence





# Sources of Information

- ✓ Daily Grades – Infinite Campus/Schoology
  - ✓ Quarter / Semester Grades
- ✓ EOC (Milestones)/SLO Assessment Results





# After School Programs

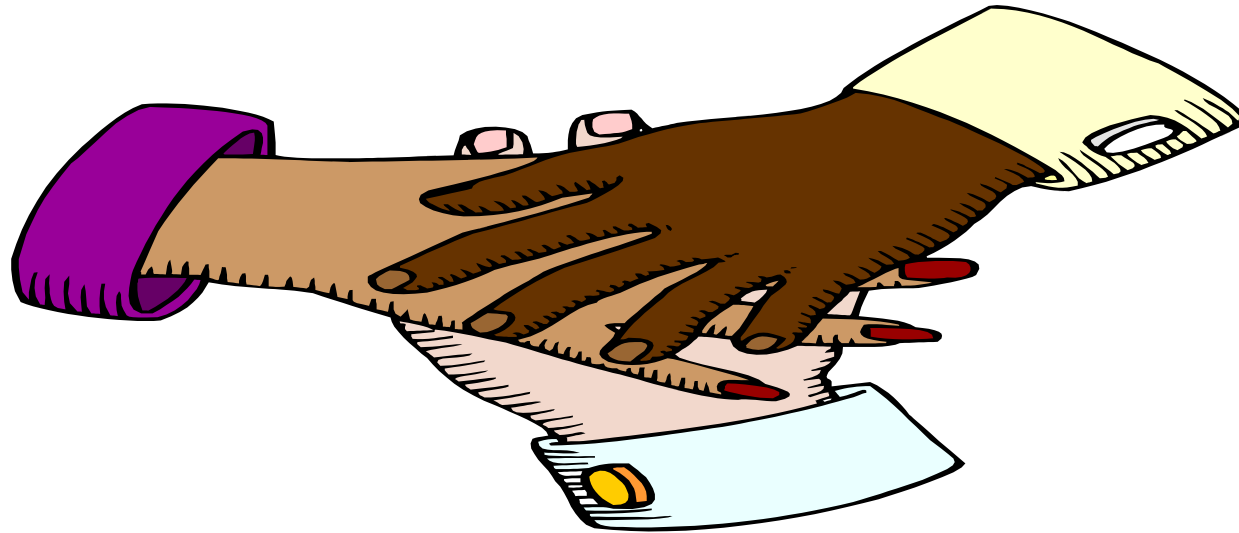
## Credit Recovery

- Students use computer based-curriculum to recover credit from previously failed courses

## 21<sup>st</sup> Century

- Polished Prepared Professionals
- Ticket to Success
- College & Career Day

# We Cannot Do It Without You!



# We Need You To Partner With Us!

# Parent involvement is the key!



Parents are required by law to be involved in their child's education by attending meetings, making sure their child is at school, and assisting the school with needs their child may have to ensure their educational success.



# Parent Involvement Policy



**\*See Handouts for District and MAHS Policy\***

These policies describes how the district and school will provide opportunities to improve **parent engagement**, support **student learning**, and **academic achievement**!

PARENTS NEEDED!!!

# School/Parent Compact



**\*See Handout\***

**Compact Between:**  
**Parent, Student, Staff**

# Highly Qualified Staff Information



100%

of MAHS staff is  
highly qualified!

**WALTON COUNTY BOARD OF EDUCATION**  
200 Double Springs Church Road, Monroe, Georgia 30656, Telephone 770-266-4520, Fax 770-266-4415  
[www.walton.k12.ga.us](http://www.walton.k12.ga.us)

**Gary Hobbs**  
Superintendent

**Rusty Linder**  
Assistant Superintendent

**Dr. Nathan Franklin**  
Assistant Superintendent

**BOARD MEMBERS**

**Jeremy Kilburn**  
Chairman

**David Breedlove**  
Vice Chairman

**Gwen Cantrell**  
Tom Gibson  
Lynn Hill  
Coleman Landers  
Diane Turner

**TO:** ALL PARENTS/GUARDIANS

**FROM:** GARY HOBBS, SUPERINTENDENT *GH*

**SUBJECT:** *Elementary and Secondary Education Act*

**DATE:** August 11, 2014

In compliance with the requirement of the Elementary and Secondary Education Act, as the parent or guardian of a student in the Walton County School District, you have the right to know the professional qualifications of the teachers who instruct your child. You may request the following information about your student's teacher(s):

- whether the teacher has met state qualification and licensing criteria for the grade levels and subject areas in which the teacher provides instruction;
- whether the teacher is teaching under emergency or other provisional status through which state qualification or licensing criteria have been waived;
- the baccalaureate degree major of the teacher and any other graduate certification or degree held by the teacher, and the field of discipline of the certification or degree; and
- whether your child is provided services by paraprofessionals and, if so, their qualifications.

The Walton County School District has always placed a high priority on hiring and placing highly qualified teachers in our classrooms, and we will continue to do so. If you would like to receive any of this information regarding the qualifications of your child's current teachers, please contact Wilma Widmer, Chief Human Resources Officer, in writing at 200 Double Springs Church Road, Monroe, Georgia 30656 or [wwidmer@walton.k12.ga.us](mailto:wwidmer@walton.k12.ga.us) and this information will be provided to you in a timely manner.

As always, if you ever have any questions about your child's education, please feel free to contact his or her teachers or principal.

*In Pursuit of Excellence*  
Walton County Public Schools  
Equal Opportunity Employer

# What is ESA?



## ***Elementary and Secondary Education Act***

- ***What changed?*** ESEA waivers eliminate Supplemental Educational Services (SES) and Public School Choice (Choice) options. Systems no longer use the terms “needs improvement” (NI) based on adequate yearly progress (AYP) reports.

***What does the waiver do?*** The ESEA waivers provide greater flexibility for identified schools in designing a flexible learning program tailored to the needs of the school. Identified schools will have the capacity to serve more students in need for additional academic supports.

**NEW status terms:** Reward, Priority, Focus and Alert Schools

Title I schools will now implement specific programs and interventions based on this new status identification. Only Priority Schools and Focus Schools will be required to implement and develop flexible learning programs (FLP) beginning June 2012. Initial designations are based on 2011 test data.





# 2014-2015 Parent Survey Says:



# Parents Appreciate...

- Callouts, Email messenger
- Online grading program
- Website, marquee, mail out
- Calendar of events on website
- Individualized contacts by staff



# Parent Resource Center

Access to a Computer and Printer

ALL Title I Information

Program Assistance Information

Check your Child's Grades

CCGPS Information and Resources





# Get Involved!

- ✓ **Conference** with teachers
- ✓ Attend Title I Parent Involvement **Meetings**
- ✓ Volunteer at school
- ✓ Join **MAHS PTSO**
- ✓ Check our Website for **events, updates** and **contact information**

[www.monroeahigh.org](http://www.monroeahigh.org)

## Example Events

9<sup>th</sup> Gr transition  
Open House  
FAFSA Night  
Curriculum Night  
District technology  
workshops  
Senior conference  
STEM Fair  
EL cluster meetings

# Thank You For Your Participation



- **Complete survey**
- **Contact us for comments and questions**

770-266-4599

[www.monroeareahigh.org](http://www.monroeareahigh.org)